

LOWRANCE®

Pub. 988-0160-461



XOG™

Mapping GPS and Multimedia Player Quick Start Guide

Power Cable

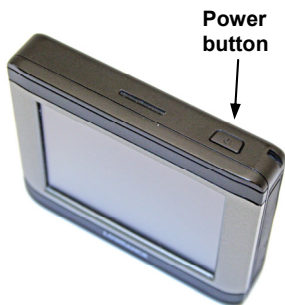
The Lowrance XOG™ GPS operates on an internal rechargeable battery. Battery charge is probably low at time of purchase. The first time you use XOG you should connect it to power. XOG can be powered in several ways:

- Cigarette lighter cable, using 12-volt vehicle power. Shown at right.
- USB-PC cable, using power supplied by personal computer.
- Optional AC adaptor, using 120-volt AC household power.



Battery charge status is displayed on the Main Menu. See page 6.

Power On and Off

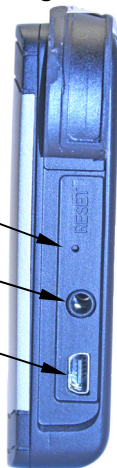


To turn XOG on, press the power button on the top of the unit. To turn off, press and hold the button for three seconds.

To acknowledge the warning messages that appear during startup, press the on-screen X button that appears in the top right corner of the display. Follow the on-screen instructions to select your country and language.

Left side

Right side



SD card slot

Reset button

Headphone socket

USB-to-PC/External power socket (mini-USB)

Lowrance XOG GPS, side views. Protective rubber covers are pulled back to show details.

Registering XOG

When you connect XOG to a computer the first time, you can register the unit at the on-line MapSelect store in order to purchase and download additional maps.

XOG comes pre-loaded with turn-by-turn road maps to guide you while driving. The MapSelect store provides additional content for your out-

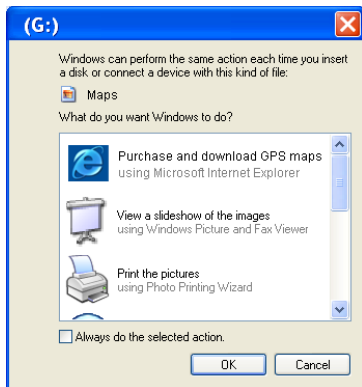
door travels. You can also purchase pre-programmed maps on an SD card from your Lowrance dealer.

To access the MapSelect store, you must first insert an SD card in XOG's card slot. When connected to a PC, XOG adds a file to the card that automatically sends your web browser to the MapSelect store. If you prefer, you can manually log-on at www.mapselect.com. You can also log on manually after you register.



To connect XOG to a PC and register online:

1. Insert an SD card in XOG's card slot.
2. Connect the USB-to-PC cable to a USB port on your PC.
3. Connect the other end of this cable to the mini-USB port on XOG.
4. Power XOG on as described above. When using Microsoft® Windows®, your PC will recognize XOG and assign it a drive letter.
5. A Windows dialog box will ask if you want to connect to the internet and



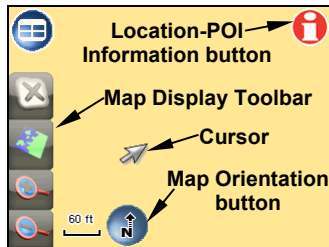
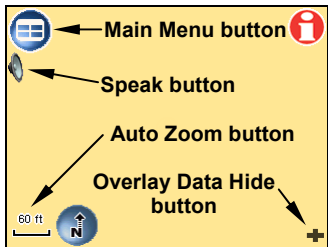
visit the Lowrance online map store. Click on this link to access the MapSelect store and registration site.

6. Follow the on-screen prompts to register your XOG and set up a MapSelect account. More information about the MapSelect store can be found on-line using the Help function.

Menus and Main Functions

You can tap on-screen buttons or other menu items on XOG to quickly access features. Most features are accessed from XOG's Main Menu.

To access the Main Menu, tap the on-screen **MAIN MENU** button.



XOG's map page control tools.

To access the cursor and Map Display Toolbar, tap anywhere on the map page. With the cursor displayed, you can press and "drag" to pan the map.



Main Menu.



Map button displays your current position on a moving map, including information on your current route.



Music button lets you to choose the audio play list, adjust volume and set various music play controls.

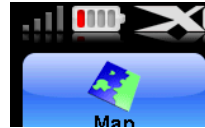
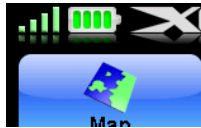


Options button has three pages with settings that control operations and provide additional information.



Find button has three pages of search options designed to help you find destinations quickly and easily.

Main Menu also contains power and battery indicators.



A power plug symbol appears when external power is connected. It flashes while the battery charges. Charging is complete when flashing stops. Disconnect external power and a battery symbol appears. Four green cells show a full battery. A single red cell warns that the battery is low.

Mounting Instructions

The mount secures the unit to glass or other smooth surfaces.

To attach the mount:

1. Press the suction cup against a clean surface.
2. Push the locking lever toward the base of the mount.
3. To remove it, disengage the locking lever and pull on the suction release tab.
4. To dismount XOG, push the release tab at top of unit up slightly. Then, lift the unit forward and out of the bracket.



To attach unit, engage bottom edge to bottom of mount. Push back on unit until it snaps into place.

⚠ CAUTION

Do not leave the unit unattended on an automobile dashboard. When the GPS is not in use, protect it from theft and heat by storing it in an unobtrusive location away from direct sunlight. In warm seasons the temperature can become hot enough to prevent the GPS unit from operating. When the GPS is not in use for an extended period of time we recommend bringing it indoors and storing it at room temperature.

⚠ WARNING

When mounting a GPS unit in an automobile you must avoid any installation that obscures instruments and controls or restricts the driver's view through the windows. Avoid placing the GPS where it could be propelled by an airbag. Some areas may restrict mounting any electronic device in any location on an automobile dash or windshield. Check local laws before using these mounts. Check the suction mount for adhesion each time you use the unit and reinstall it. This is a portable mounting device and the normal heating and cooling cycle of a car's interior can loosen the seal. A loose seal could allow the unit to fall or come loose during vehicle operations.

Determine Your Position Before Traveling

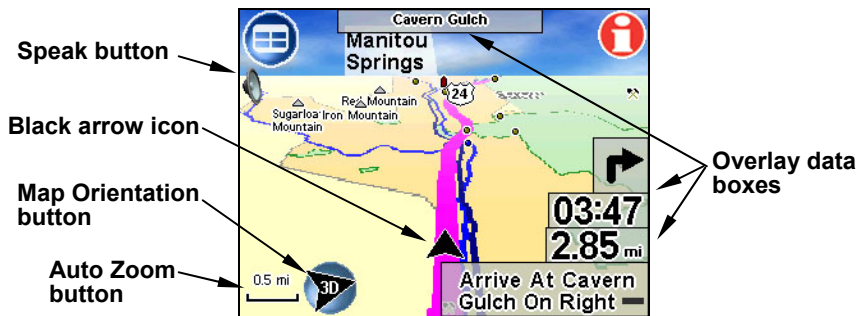
XOG must lock-on to multiple GPS satellites to determine your current position and navigate. This requires a clear view of the sky, unobstructed by structures or heavy foliage.

When you begin a trip, make sure XOG can "see" the sky and *wait for it to determine a position before you start driving or walking*. A question mark flashes over the current position arrow to indicate the unit has not calculated its position.

XOG usually has good satellite reception through automobile windows. Some windshields have heat reflective properties or defrosters that block GPS signal reception. Consult your vehicle manufacturer to determine if your car has this special glass installed. If so, you may need to mount the unit near another window.

Map Page

The unit's map page displays where you are as well as your surroundings.



A black arrow icon indicates your position on the map page. The map displays the route with a magenta line, with colored dots at each turn.

Use the **Speak button** to control the volume level of spoken, turn-by-turn instructions.

A **black arrow icon** represents your position on-screen. The arrow always points in the direction you are traveling.

Use the **Map Orientation button** to toggle between three different map views:



North Up always shows the map with North at the top of the screen. Track Up rotates the map so that the direction you are traveling is always at the top of the screen. In Track Up, the button rotates to show which way is North. 3D View displays the map from a position above and slightly behind the black arrow icon.

Overlay Data boxes provide information about your route. Overlay data appears in semi-transparent boxes on the map screen. The transparency level of overlay data boxes can be controlled from the Interface Options screen on Menu 2 in the Options feature.

Use the **Auto Zoom button** to toggle automatic zoom on and off. As the map screen moves to track your position, Auto Zoom will enlarge the map based on your speed and the distance to the next turn. For manual zoom control, turn off Auto Zoom and launch the Map Display Toolbar.

The **Map Display Toolbar** controls the map screen. To bring up the Map Display Toolbar tap anywhere on the map screen. The toolbar buttons are, from top to bottom:



X clears the cursor and Map Display Toolbar from screen.



The **Map View** button toggles between three different map screen views.



Zoom In to show less area but more detail.

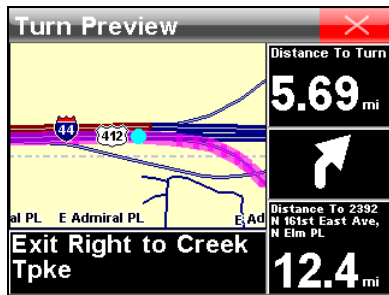
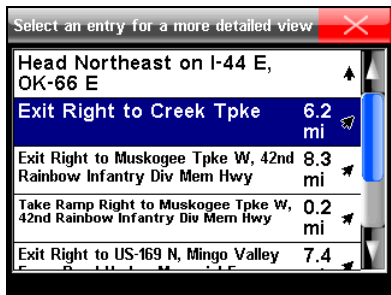


Zoom Out to show less detail but a larger area.

Navigation Instructions

XOG is designed to generate a route from your current position to a selected destination. If you miss a turn or are forced to detour, it automatically generates a new route based on your new position.

You can view a list of route directions by selecting **DIRECTIONS LIST** from Options Page 1. Select any turn from the list and another screen appears, showing a close-up of the area around the turn.



The Directions list (left) shows every turn you will make while navigating to a destination. The Turn Preview screen (right) will show you a map view of the turn. A preview like this automatically appears whenever you are close to a turn.

Location Information button

The Location Information button is shown at right. Tap this button to bring up the Location Information or POI Information screen, depending on whether the cursor is on-screen.

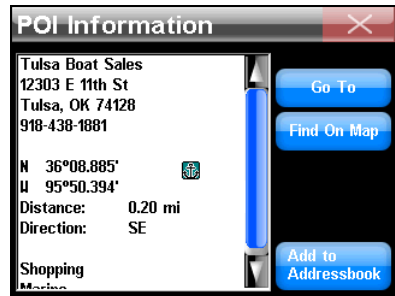
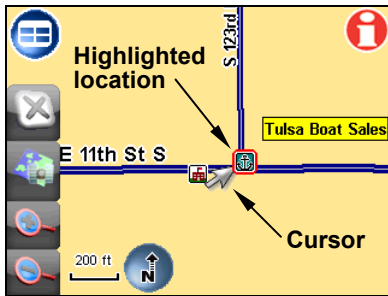


The Location Information button has four major functions:

1. Look up the latitude and longitude of your current position or some other location you select with the cursor.
2. Look up a variety of other information for selected Points of Interest and map landmarks. This varies by the item selected and ranges

from addresses and telephone numbers to available services and distance to the selected item.

3. Add the current position or a selected item to the Addressbook. (Use the **ADD TO ADDRESSBOOK** command.)
4. Navigate to the selected item. (Use the **GO TO** command.)



A business location (left) highlighted with the cursor. The POI Information screen for the highlighted location is shown, at right. You can use the cursor and the Location Information button like this to look up information on many other map symbols as well as POIs.

Find Address or Point Of Interest (POI)

The most common navigation method is to look up a destination with the Find feature, then use the Go To command to direct you there. The XOG manual discusses these functions in more detail, but here is an outline of how they work:

To find an address:

1. From the **MAIN MENU**, select the **FIND** button and press **ADDRESS**.
2. XOG questions you about which state/province and which city. Follow the on-screen prompts and the virtual keyboard appears so you can fill in the answers. When entering street names, **DO NOT** use modifiers such as "North" or "Avenue."
3. After you enter city, state, address and street name, XOG searches it's database and gives you a list of possible addresses. Select the address you want.
4. XOG gives you the option to add the address to your Addressbook, Find it on the map or go to it. Press **Go To** to begin navigation.

To find a POI:

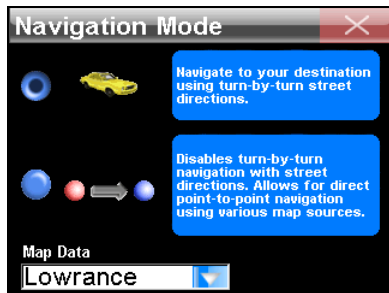
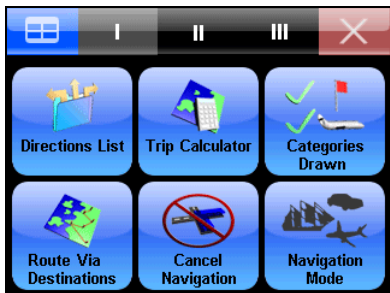
1. From the **MAIN MENU**, select the **FIND** button.
2. Select one of the 18 categories on the 3 Find pages.
3. Narrow your search by selecting a subcategory, or tap in the Name Filter box to spell out what you're looking for.
4. XOG displays a list of the items nearest to you. Select the item and from its information screen you can go to it, find it on the map or add it to the Address Book.

Switch between Navigation Modes

XOG is a dual-purpose navigator. In addition to providing verbal *turn-by-turn* navigation instructions for the road, it also displays plot trails

and performs traditional *straight-line* (or *point-to-point*) navigation in off-road situations.

To change to Point-to-Point mode, press **MAIN MENU**. Now select **OPTIONS, PAGE 1**. Press the **NAVIGATION MODE** button and the Navigation Mode screen will appear.



Options Page 1, left, and Navigation Mode screen, right.

Turn-by-Turn (car image) is selected as the default setting. Choose Point-to-Point (A to B image) and a warning message appears asking if you are sure you want to change modes. Choose **YES** and close the Navigation Mode screen.

LOWRANCE®

Lowrance Pub. 988-0160-461

Printed in USA 101207

© Copyright 2007
All Rights Reserved
Navico